



## **2020 Presidential Election: North Carolina**

Oct 30 – Oct 31 2020



# Methodology & Sample Profile

This study was conducted by AtlasIntel, an independent research & data intelligence firm.

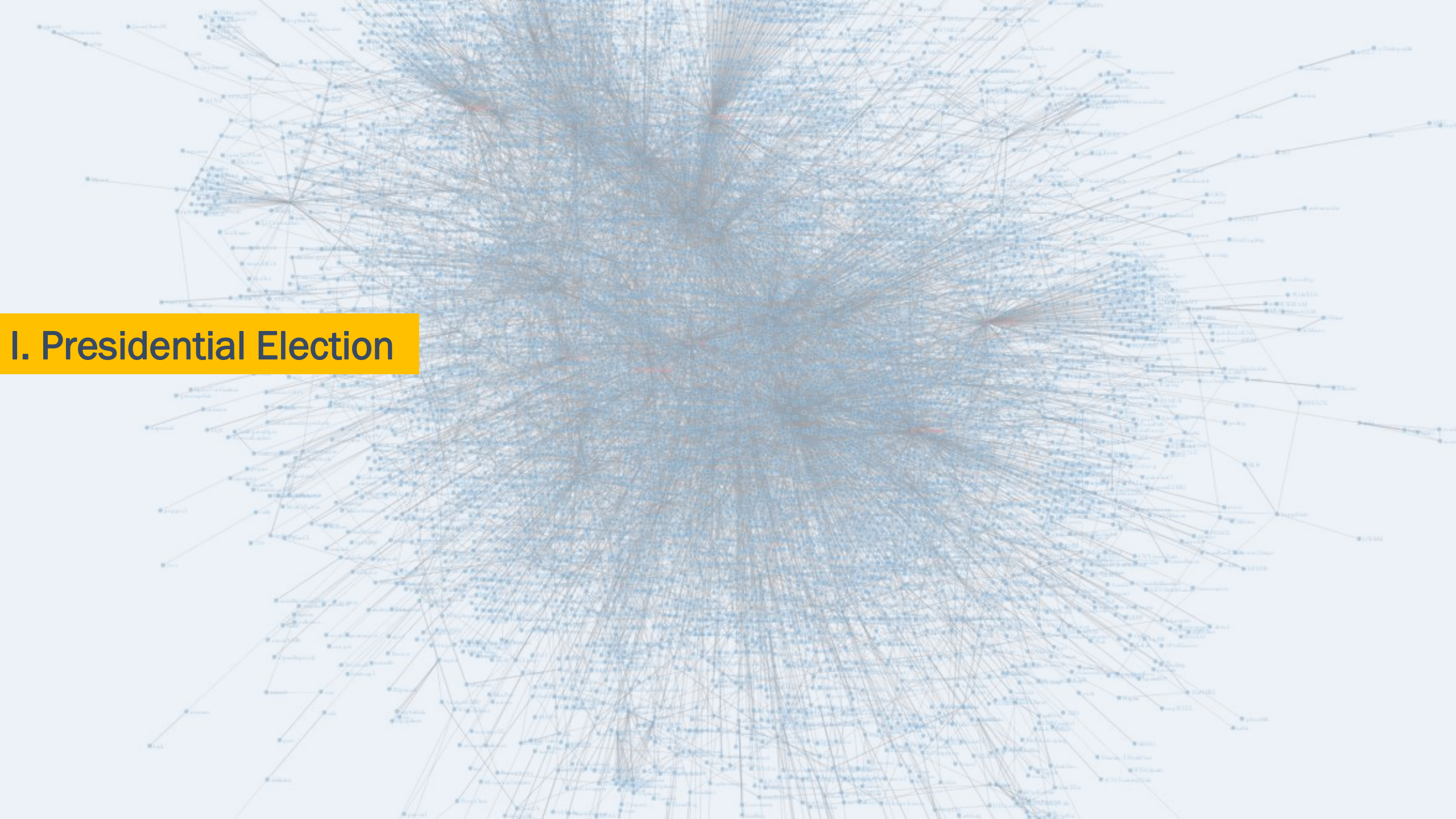
Random interviews of North Carolina adults were conducted online between October 30 and October 31 2020. The sample was post-stratified with propensity scores to match the profile of registered voters on the following variables: gender, region, age group, education, family income, and race. Results are reported for 812 likely voters. The margin of error for likely voters is +/-3% at the 95% confidence level. Some percentages do not add up to 100% due to rounding.

*More information about AtlasIntel can be obtained by visiting [www.atlasintel.org](http://www.atlasintel.org).*

Gender		Partisanship (self-reported)	
Female	51.4%	Democrats	33.5%
Male	49.0%	Republicans	30.5%
		Independents	36.1%
Age Group		Household income	
18 – 29	11.7%	Below 50k	43.2%
30 – 44	22.8%	50k – 100k	31.0%
45 – 64	44.3%	Above 100k	25.8%
65+	21.2%		
Race		Education	
White	72.9%	College degree or higher	50.7%
Black	18.5%	All other	49.3%
Hispanic	3.4%		
Asian	1.5%	Vote in 2016 Presidential Election	
Other	3.8%	Donald Trump	42.3%
		Hillary Clinton	44.2%
		Other, don't remember, didn't vote	13.4%

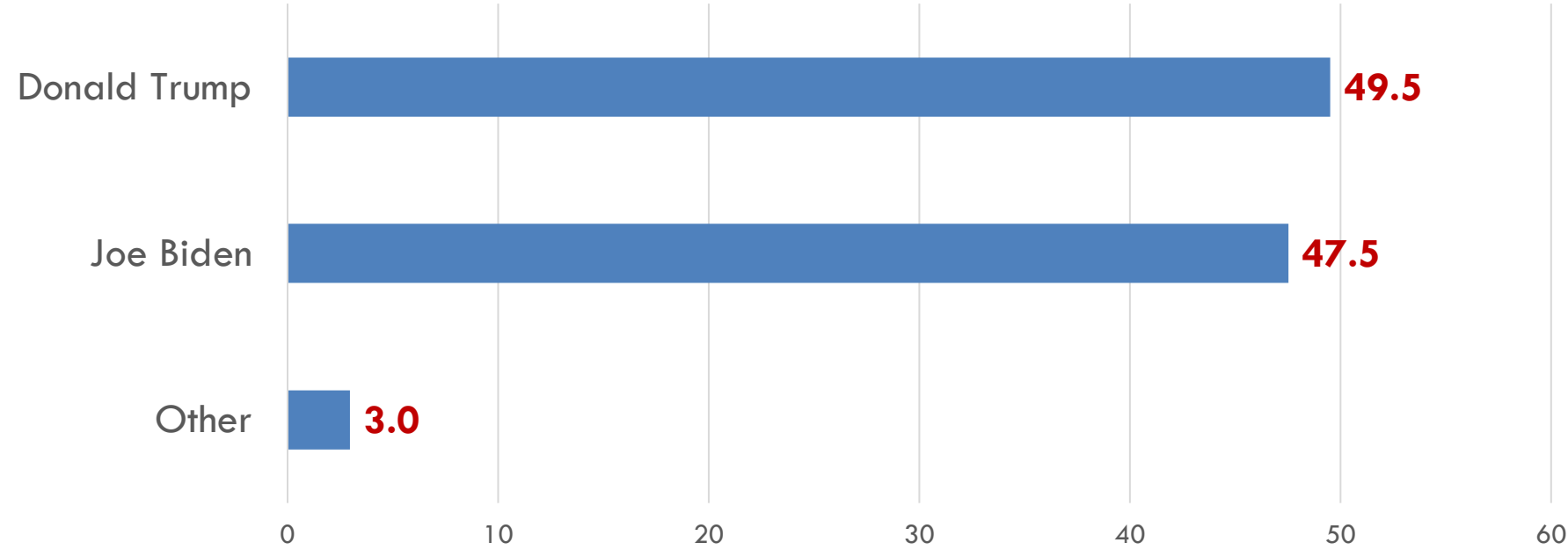


# I. Presidential Election



# Whom will you vote for in the US presidential election?

	<i>Oct-20</i>
Joe Biden	48
Donald Trump	50
Other	3



# Whom will you vote for in the US presidential election?

[Crosstabs]

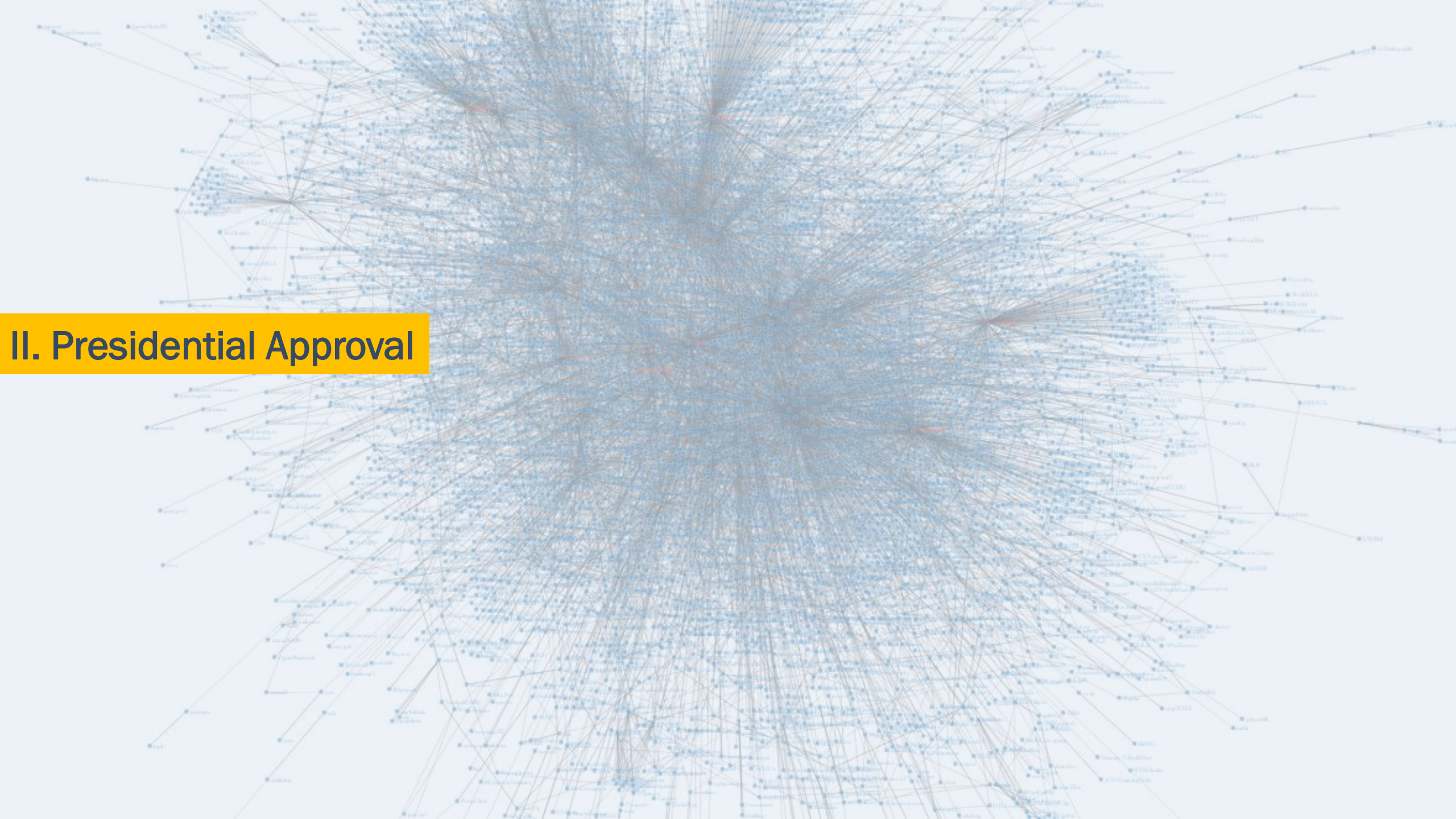
	Gender		Age			Race				
	<i>Men</i>	<i>Women</i>	<i>18 - 44</i>	<i>45 - 65</i>	<i>65+</i>	<i>Asian</i>	<i>Black</i>	<i>Hispanic</i>	<i>Other</i>	<i>White</i>
<b>Donald Trump</b>	57	42	56	45	48	32	18	51	58	57
<b>Joe Biden</b>	40	55	39	53	51	58	79	49	35	40

	Household Income			Partisanship (self-declared)			2016 Vote		
	<i>Below \$50k</i>	<i>\$50k - \$100k</i>	<i>Above \$100k</i>	<i>Democrat</i>	<i>Independent</i>	<i>Republican</i>	<i>Donald Trump</i>	<i>Hillary Clinton</i>	<i>Other</i>
<b>Donald Trump</b>	46	54	49	10	53	89	91	10	49
<b>Joe Biden</b>	49	45	49	89	42	8	7	88	40



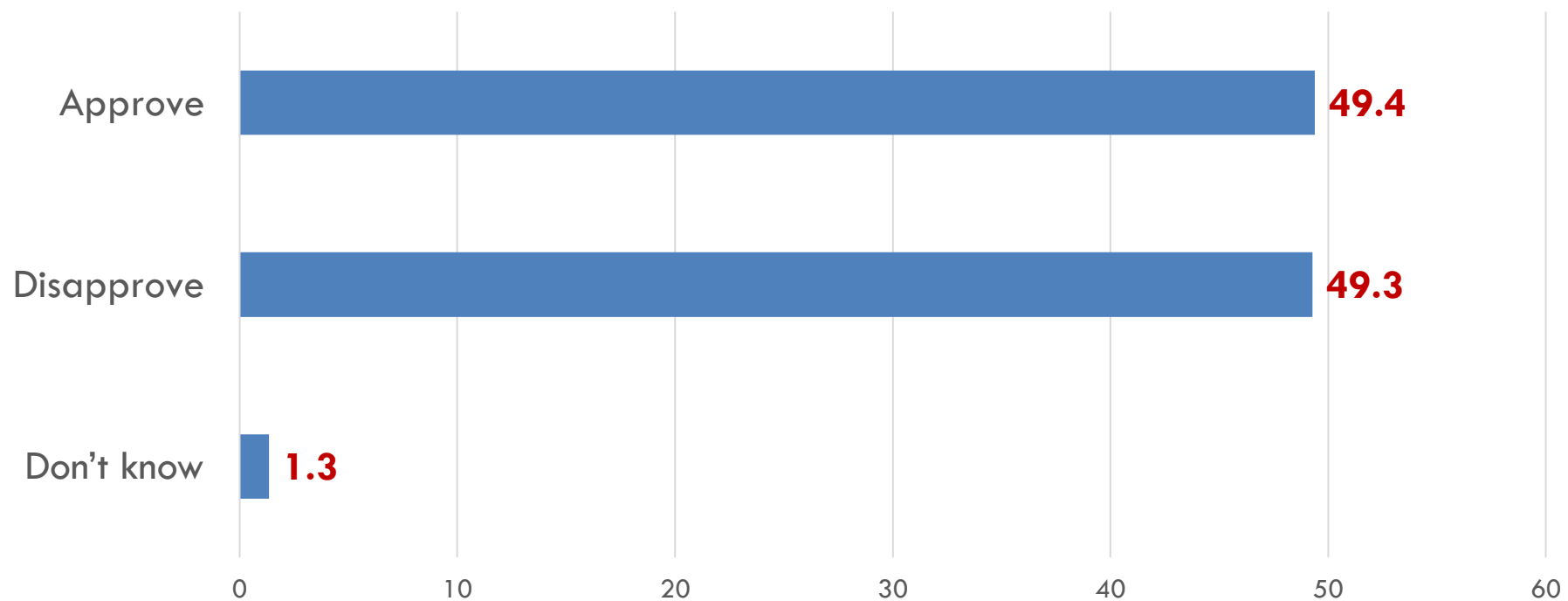


## II. Presidential Approval



## Do you approve or disapprove of the job Donald Trump is doing as president?

	<i>Oct-20</i>
Approve	49
Disapprove	49
Don't know	1



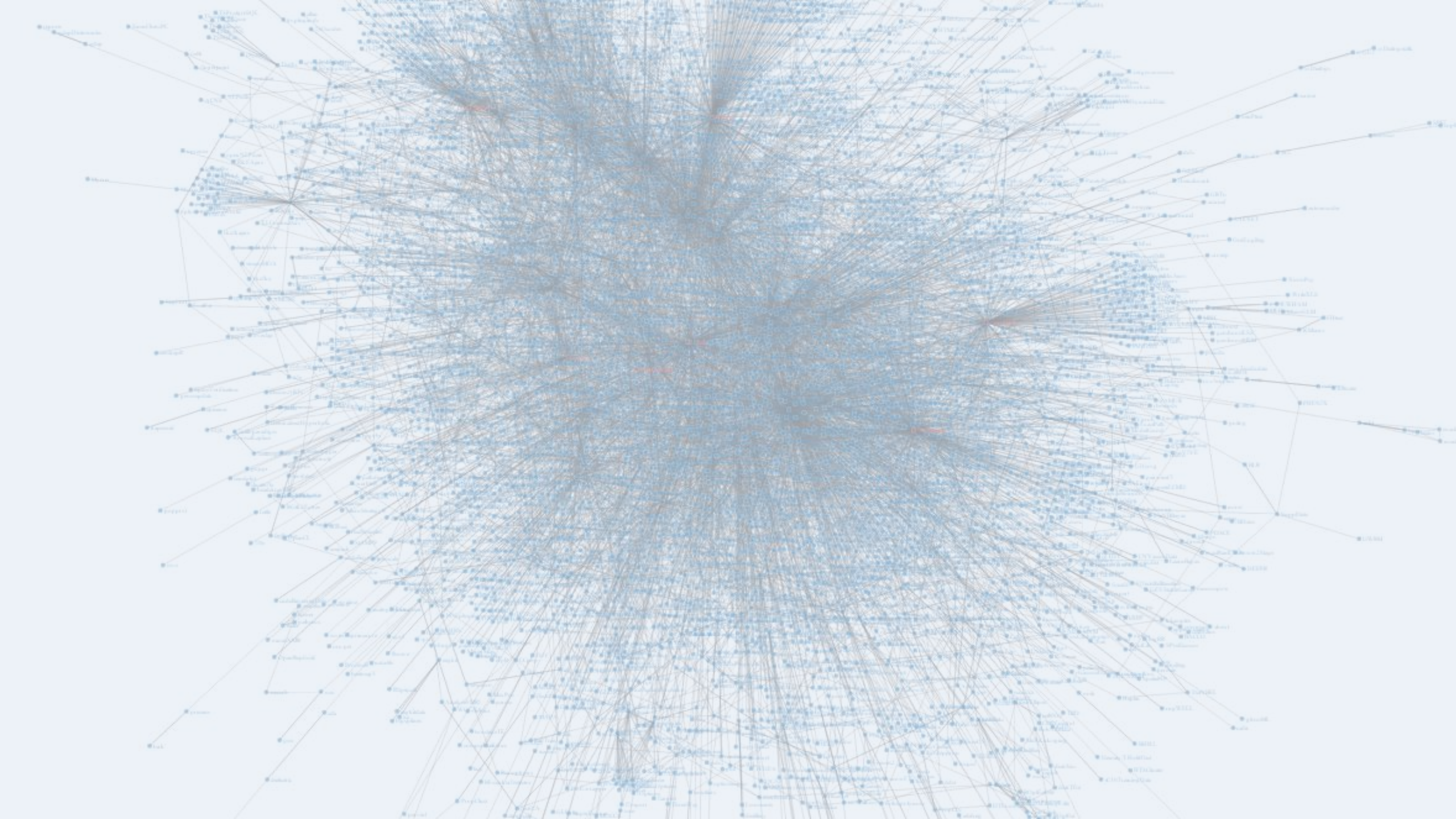
Do you approve or disapprove of the job Donald Trump is doing as president?

[Crosstabs]

	Gender		Age			Race				
	Men	Women	18 - 44	45 - 65	65+	Asian	Black	Hispanic	Other	White
Approve	57	42	53	45	48	32	17	51	64	57
Disapprove	41	57	41	54	52	68	82	49	35	41

	Household Income			Partisanship (self-declared)		
	Below \$50k	\$50k - \$100k	Above \$100k	Democrat	Independent	Republican
Approve	46	54	49	10	52	90
Disapprove	52	45	50	90	45	9





In 2020, AtlasIntel polls for the US democratic primaries had the smallest mean error across all pollsters. AtlasIntel conducted the most accurate polls in New Hampshire, California, and Florida.

pollster	mean error
IRKM Research and Communications Inc.	0.06354
University of Massachusetts Lowell	0.06194
Monmouth University	0.05217
YouGov	0.05006
Marist College	0.04994
University of New Hampshire	0.04254
American Research Group	0.04207
Change Research	0.04170
Park Street Strategies	0.03640
Emerson College	0.03567
Suffolk University	0.03454
Civiqs	0.03360
David Binder Research	0.03040
Data for Progress	0.02943
Elucd	0.02710
AtlasIntel	0.02594

#### Performance up to February 12 2020

Source: G. Elliott Morris, The Economist

<https://twitter.com/gelliottmorris/status/1227454160813088769>

QUALIFYING POLLSTERS			
Rank	Pollster	RMSE	# of Polls
1	ATLASINTEL	4.74	7
2	DATA FOR PROGRESS	5.92	23
3	EMERSON COLLEGE	5.50	7
4	MONMOUTH UNIVERSITY	6.27	6
5	CHANGE RESEARCH	6.92	6
6	YOUGOV	6.98	7
7	SWAYABLE	8.04	19
8	UNIVERSITY OF MASSACHUSETTS LOWELL	11.06	7

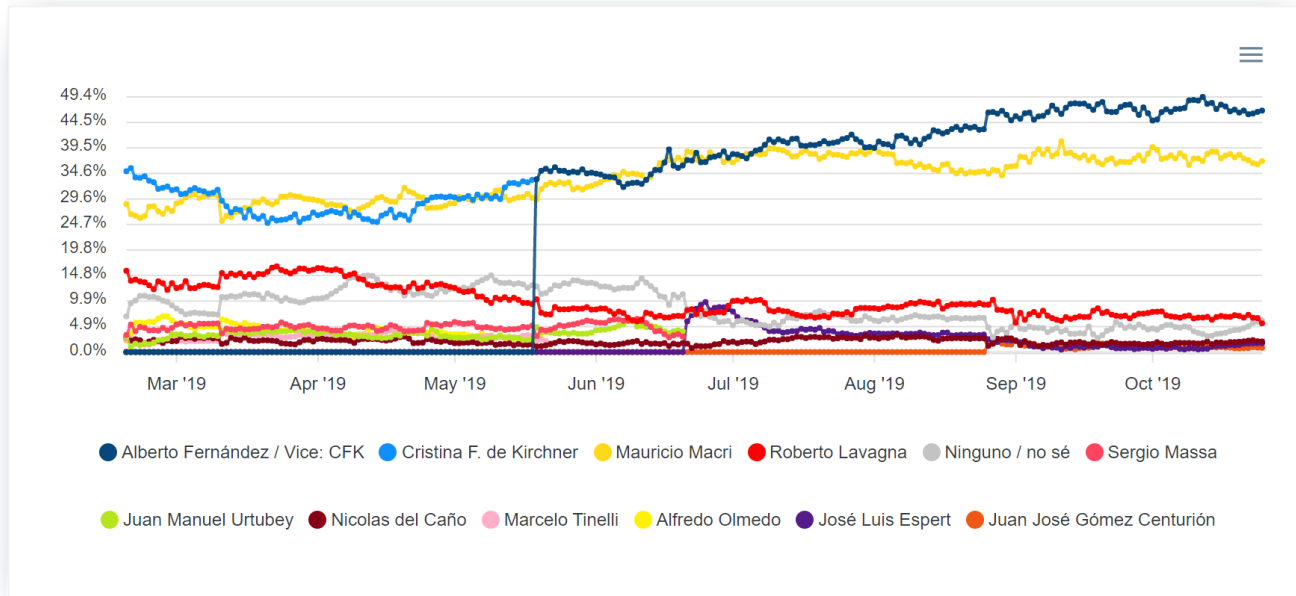
#### Performance up to March 15 2020

Source: Jack Kersting, JHK Forecasts

[https://projects.jhkforecasts.com/democratic\\_primary/analysis/](https://projects.jhkforecasts.com/democratic_primary/analysis/)

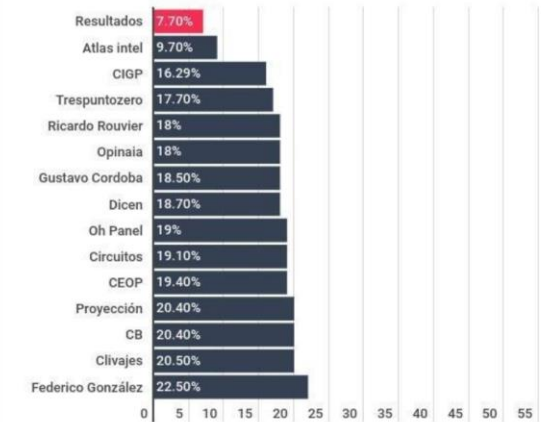


AtlasIntel had the best performance in anticipating the results of the 2019 Presidential Elections in Argentina. We conducted the only poll that predicted the results of all candidates within the margin of error.



## Diferencia entre las encuestas y los resultados en las elecciones 2019

### Diferencia



Fuente: relevamiento de Chequeado en base a 14 encuestas publicadas en diarios nacionales.



## Ranking of polls in the 2019 Presidential Elections in Argentina

		1		2		3		4		5		6		7		8		9		10		11		12		13		14		15	
		Atlas Intel		CIGP		UDES		TresPunto Zero		Ricardo Rouvier		Dicen		Oh Panel!		CELAG		Gustavo Cordoba		Clivajes		Proyección		Opinaia		Federico Gonzales		Circuitos		CB Consulto	
	Result	Result	Diff.	Result	Diff.	Result	Diff.	Result	Diff.	Result	Diff.	Result	Diff.	Result	Diff.	Result	Diff.	Result	Diff.	Result	Diff.	Result	Diff.	Result	Diff.	Result	Diff.	Result	Diff.	Result	Diff.
Alberto Fernández	48.1	49.5	1.4	51.4	3.3	51	2.9	52.5	4.4	52.3	4.2	51.9	3.8	52	3.9	52.8	4.7	52.2	4.1	53.7	5.6	54.56	6.5	55.3	7.2	54.0	5.9	53.7	5.6	58.0	7.1
Mauricio Macri	40.4	39.6	0.8	35.1	5.3	34	6.4	34.8	5.6	34.3	6.1	33.2	7.2	33	7.4	33.4	6.9	32.7	7.7	33.2	7.2	33.87	6.5	34.0	6.3	31.5	8.3	30.4	10.0	34.4	9.0
Roberto Lavagna	6.2	6.7	0.5	7.5	1.3	8	1.8	6.6	0.4	7.6	1.4	10.1	3.9	10	3.8	7.6	1.5	9.8	3.6	8.2	2.0	6.998	0.8	6.4	0.2	8.2	2.0	9.8	3.6	4.5	7.1
Nicolas del Caño	2.2	2.0	0.2	2.2	0.0	3	0.8	2.7	0.5	2.9	0.7	2.2	0.0	2	0.2	2.5	0.3	2.5	0.3	2.8	0.6	2.13	0.0	2.1	0.0	2.3	0.1	3.4	1.2	1.4	0.0
Juan José G. Centurión	1.7	1.0	0.7	2.2	0.5	2	0.3	2.1	0.4	1.6	0.1	1.4	0.3	2	0.3	2.5	0.8	1.6	0.1	1.2	0.5	1.318	0.4	1.1	0.6	2.1	0.4	1.5	0.2	1.0	0.0
José Luis Espert	1.5	1.2	0.3	1.7	0.2	2	0.5	1.3	0.2	1.4	0.1	1.3	0.2	1	0.5	1.1	0.4	1.2	0.3	0.9	0.6	1.116	0.4	1.1	0.4	1.9	0.4	1.2	0.3	0.7	0.0
AF / MM Difference	7.7	9.9	2.2	16.3	8.6	17.0	9.3	17.7	10.0	18.0	10.3	18.7	11.0	19.0	11.3	19.4	11.7	19.5	11.8	20.5	12.8	20.7	13.0	21.3	13.6	22.5	14.3	23.3	15.8	23.5	15.0



#EleccionesArgentina

Las encuestas y las elecciones 2019: sólo una consultora brasileña se acercó en el resultado

Translate Tweet





# Atlas Tracking PRO

Nationally-representative daily poll with more than 30 questions on the political and economic scenario. The polling is conducted online based on a proprietary methodology for random selection and sample post-stratification and validation.

✓ Currently available for:

## *North America*

- United States
- Mexico

## *US Swing States*

- Arizona
- Florida
- Georgia
- Ohio
- Michigan
- North Carolina
- Pennsylvania
- Texas

## *South America*

- Argentina
- Brazil
- Chile
- Colombia
- Peru


## *Europe*

- France
- Germany
- Netherlands
- Italy
- Spain
- UK



# Atlas Tracking PRO is accessible in real time through a secure URL

2020 

National 

Vote intention

Strongest candidate

Which of these following Democratic primary candidates will you vote for?

Joe Biden

64.2%

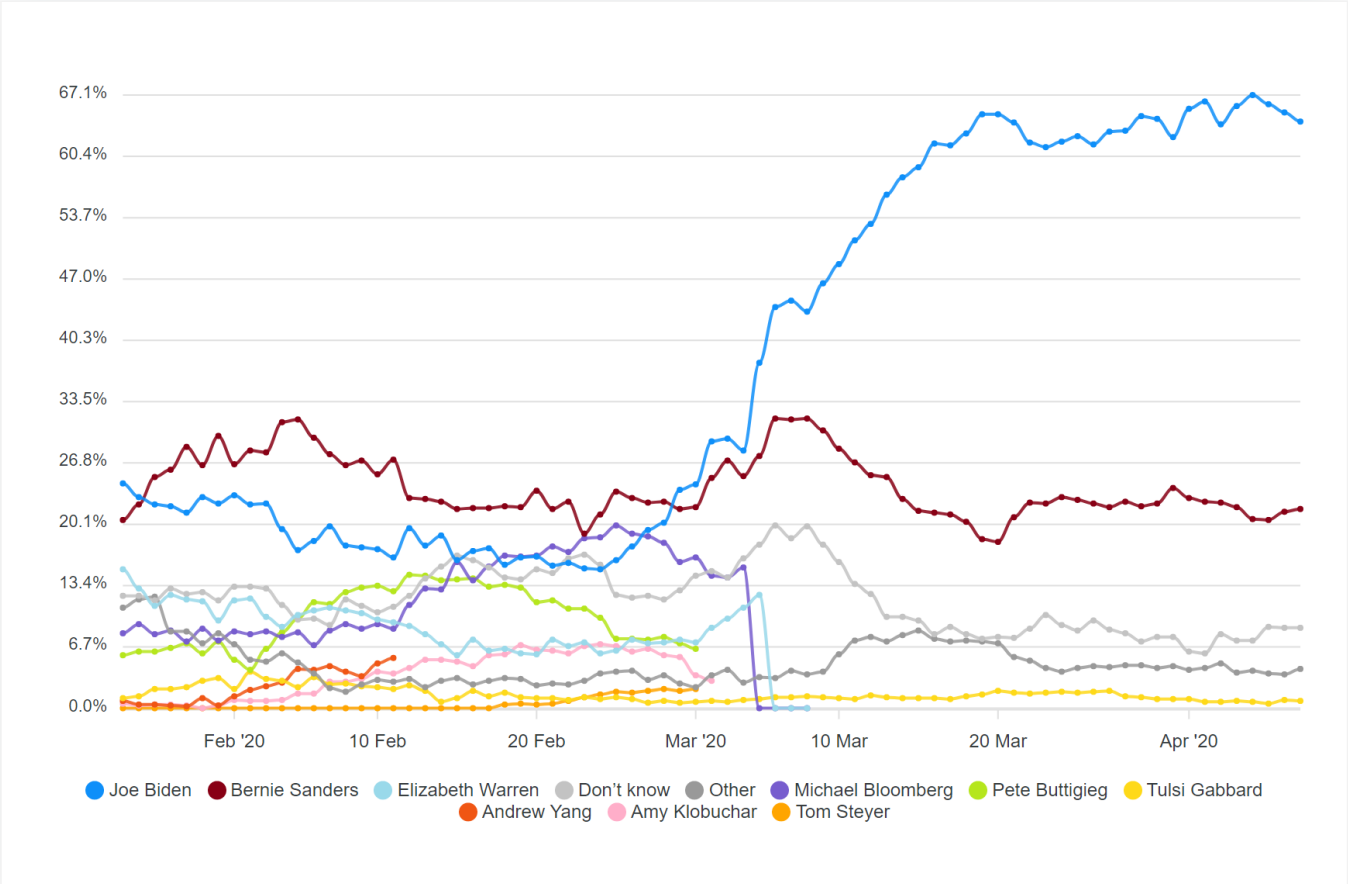
Bernie Sanders

21.8%

Don't know

8.8%

Last update 08/04/2020 09:00 EDT



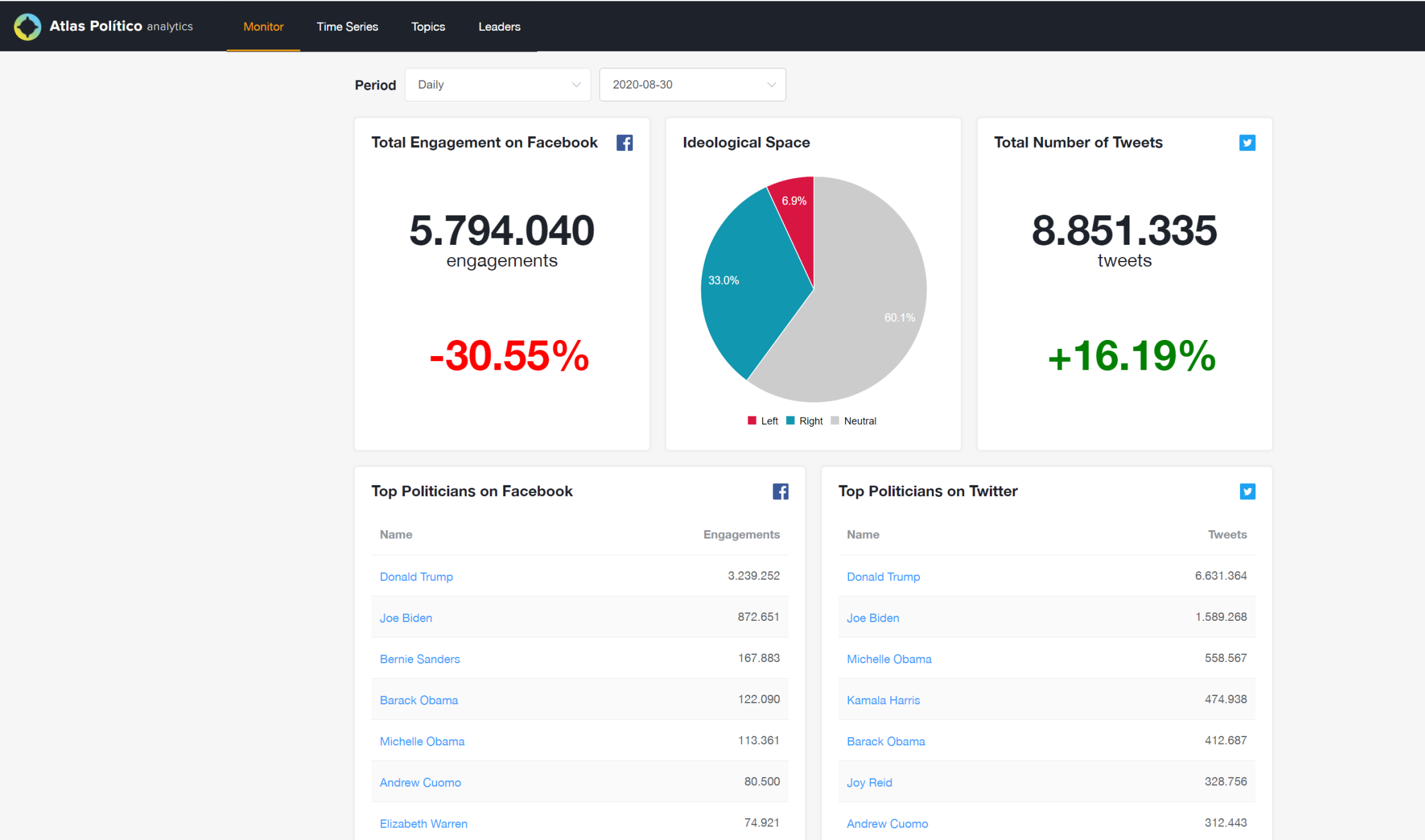
## Atlas Monitor

Atlas Monitor tracks political engagement in social media in real time. We deploy big data tools to transform huge quantities of information into intuitive and useful indicators that reveal the impact of network sentiment on political developments and electoral dynamics. All of our work carefully adheres to the privacy rights of social media users, to platform policies, and to local and international legislation.





# Atlas Monitor is accessible in real time through a secure URL



Media & Client Inquiries: [info@atlasintel.org](mailto:info@atlasintel.org)

